

## PRODUCT INFORMATION BULLETIN

### BMW E39 M5 – Dual Mass Flywheel Modification (DMF)

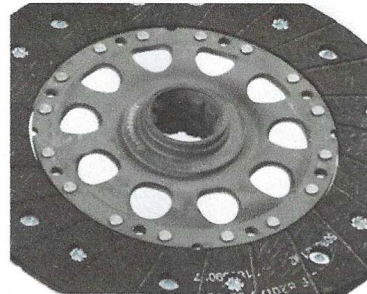
Performance Clutches supplies the following upgraded kits for the BMW 5-Series E39 M5: PC-3978-DS1H / PC-3978-DS2S / PC-3978-DS3P. Due to differences in disc construction to the OE component, installation of any of these kits requires a minor modification to the vehicle's dual mass flywheel (DMF).

The original OE clutch disc incorporates a *domed* rigid hub designed to clear the raised ridge surrounding the crankshaft bolt pattern. In contrast, the disc supplied in the Performance Clutches kits features a *flat* rigid hub. This difference in profile necessitates the slight machining of the DMF to ensure correct fitment and operation.



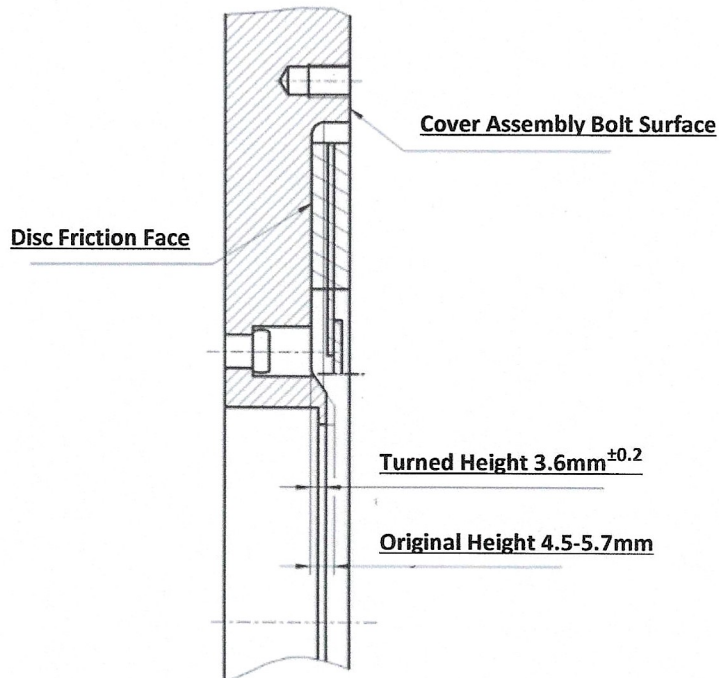
Original DMF

**Raised Ridge**



Original Rigid Disc

The height of the raised ridge is between 4.5-5.7mm. The modification requires this to be turned down to 3.6mm<sup>±0.2</sup>



**NOTE:** Protect the DMF inner from flying swarf.

**TB-BMW-M5-002**



[www.performclutch.com](http://www.performclutch.com)

Performance Clutch, Priory Cottage,  
10 Priory St, Leamington Spa, CV32 3DR, UK



+44 7511 988647

[malcolm@performclutch.com](mailto:malcolm@performclutch.com)